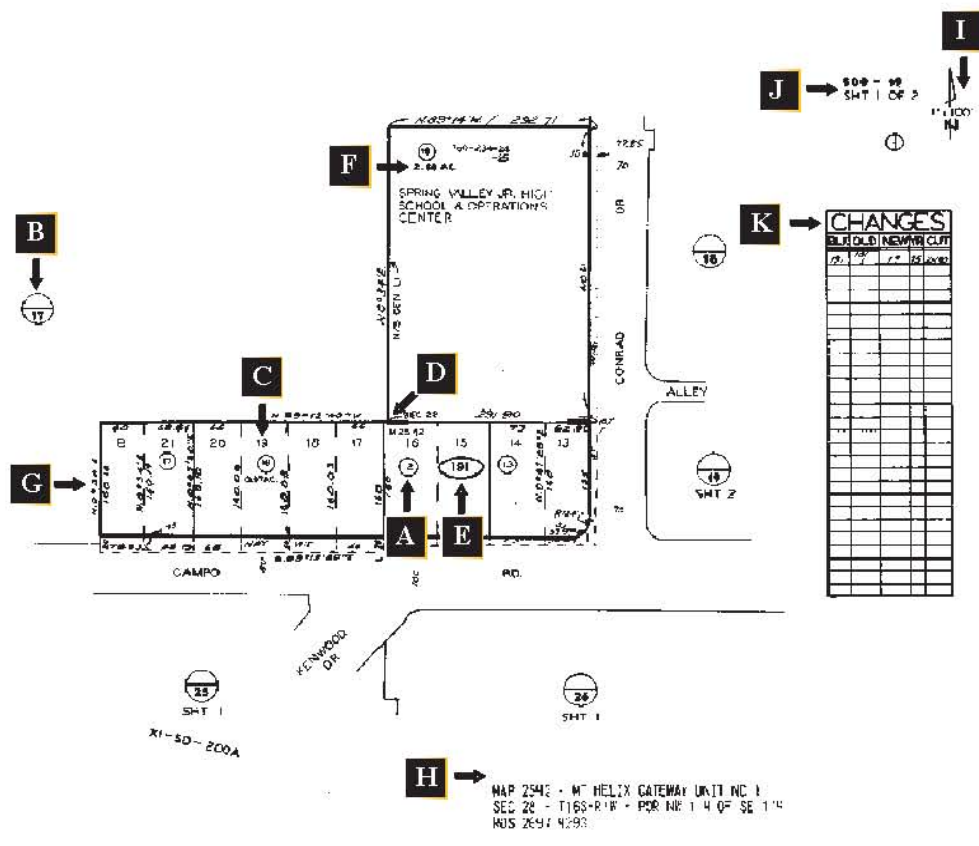


# PLAT MAP EXPLAINED

(your state and county tax map layout could vary)



**K**

**"Changes" Key:**

**BLK**  
Full, three-digit page number area of map.

**OLD**  
The old (now changed) parcel number

**NEW**  
The new (changed) parcel number

**YR**  
Assessed tax year the change took place

**CUT**  
Refers to the Assessor's file for document number, re: the change.

- A Parcel Number**  
In small circle (occasionally an oval).
- B Book & Page Circle**  
Indicates what map page (# below the line) adjoins our map and in some cases which Assessor's Book (# above the line).
- C Lot Number**  
Never circled; shows the subdivision lot number (lots 17 through 20 in example).
- D "Picture Corner"**  
Shows the exterior subdivision map boundaries as shown on the plat.

- E Page/Block Number**  
In example, 191 is Block Number; the first two digits of Block are always the Page Number (see also "J").
- F Acreage Figures**  
A decimal number with AC following. (Not always accurate; use only for estimate.)
- G Distances & Bearings**  
Data on borders of the map. This data is from recorded deeds or surveys.
- H Map Information**  
Brief description of properties included on this page.

- I North Arrow**  
Will not always be pointing "up". (SCALE: Useful if map has been printed to proper size.)
- J Assessor's Book Number**  
Followed by two digits of the Page Number, located in the upper corners of map.
- K Changes Box**  
Provides the history of the map page. (See "Changes" Key for further explanation.)

*This information is brought to you by...*



**Sama Hawk**  
Cell: (925) 260-2501  
[SamaHawk@ctt.com](mailto:SamaHawk@ctt.com)

**Tara Sembrat**  
Cell: (925) 765-0397  
[SembratT@ctt.com](mailto:SembratT@ctt.com)

Information deemed reliable but not guaranteed. © 2009 Chicago Title Company (kh 0209)



**Chicago Title**  
[www.ChicagoTitleDanville.com](http://www.ChicagoTitleDanville.com)